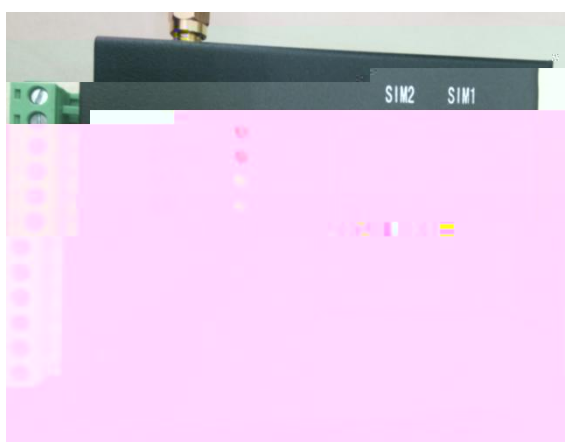


1

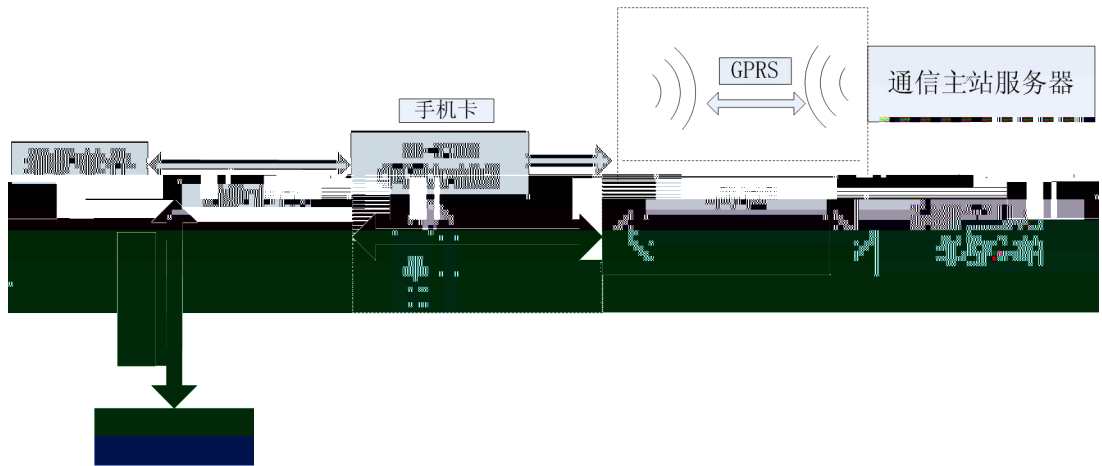
- 10 ()

0 11- 0 1



- 10 () +1 + 1

- 10 ()



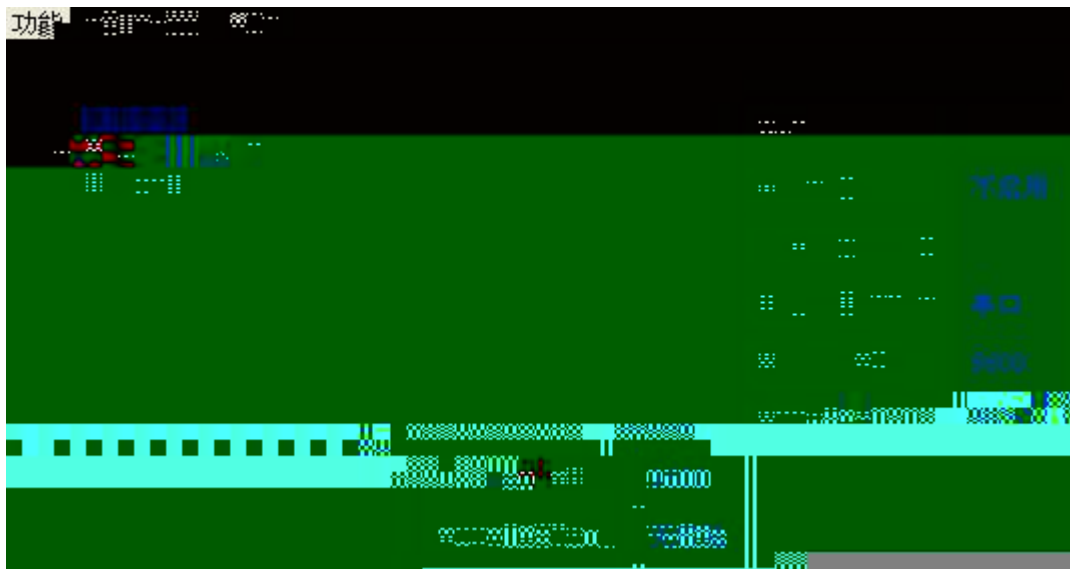
- 10 ()

- 10 ()

- 10 ()

- 10 ()

1 1





)

1 1

1

1

1

1



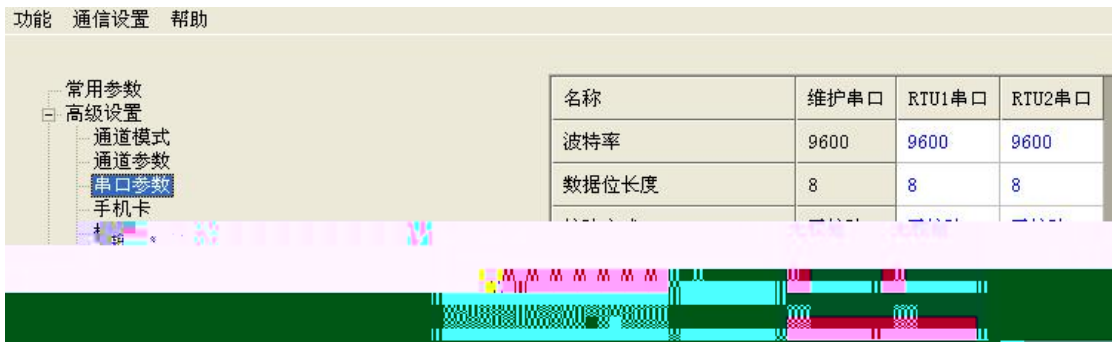
- 10 () 1 1

/

- 10 ()

/

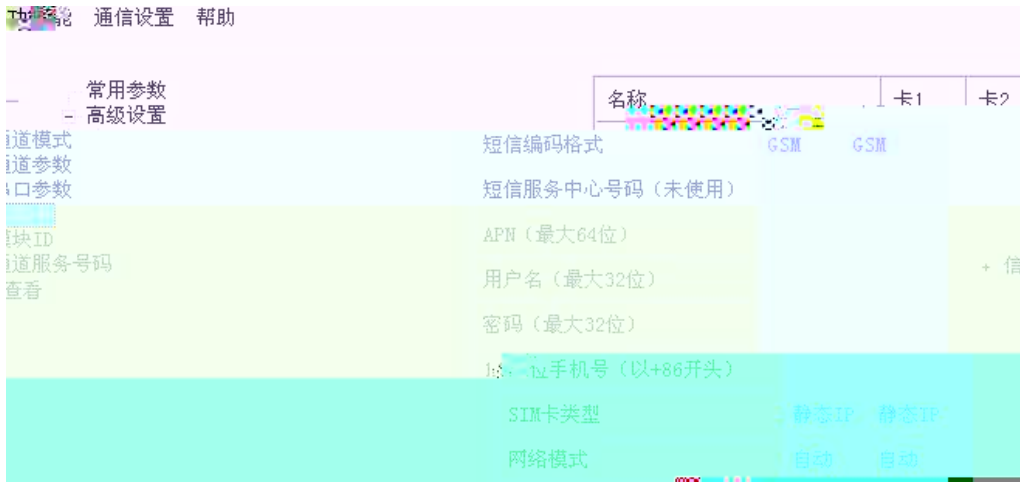
- 10 ()



- 10 ()

1 1

- 10 ()



- 10 ()
1

- 10 ()

1 - 10 ()

/ / /

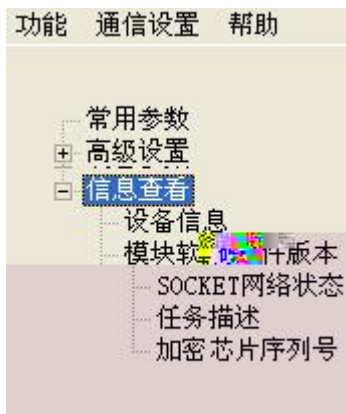


注意

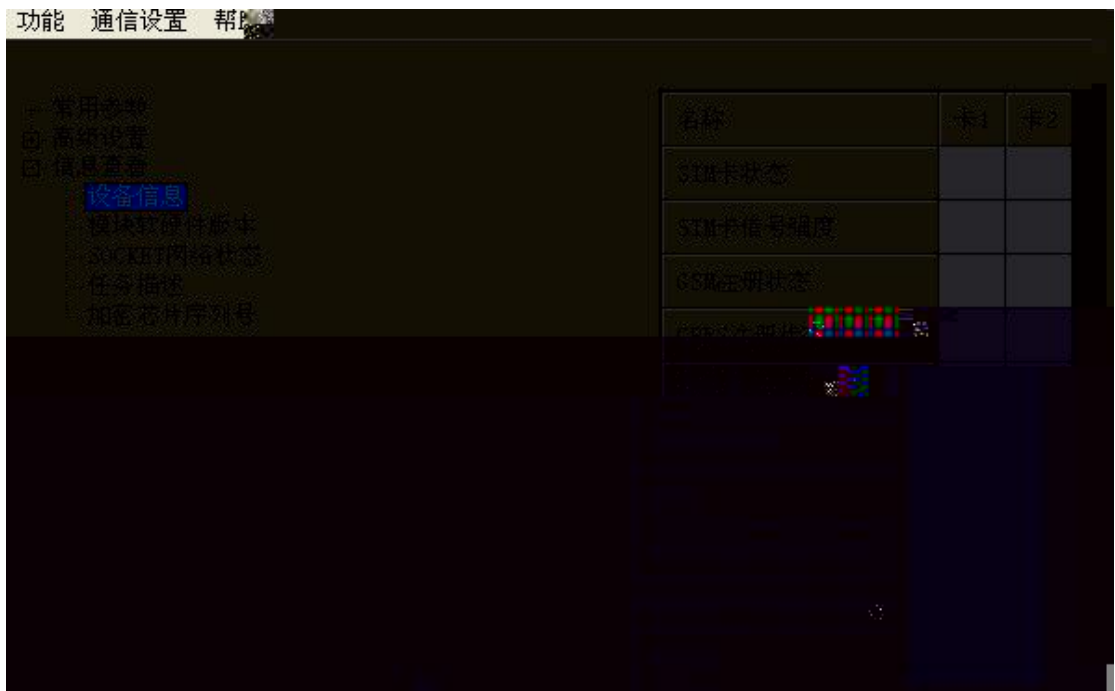
说明：当您插入公用卡时，请手动选择网络模式；当您插入SIM卡时，请手动选择网络模式。默认情况下，设备会自动选择网络模式。如果您使用的是公用卡，请在插入SIM卡后，手动选择网络模式。如果您使用的是SIM卡，请在插入SIM卡后，手动选择网络模式。

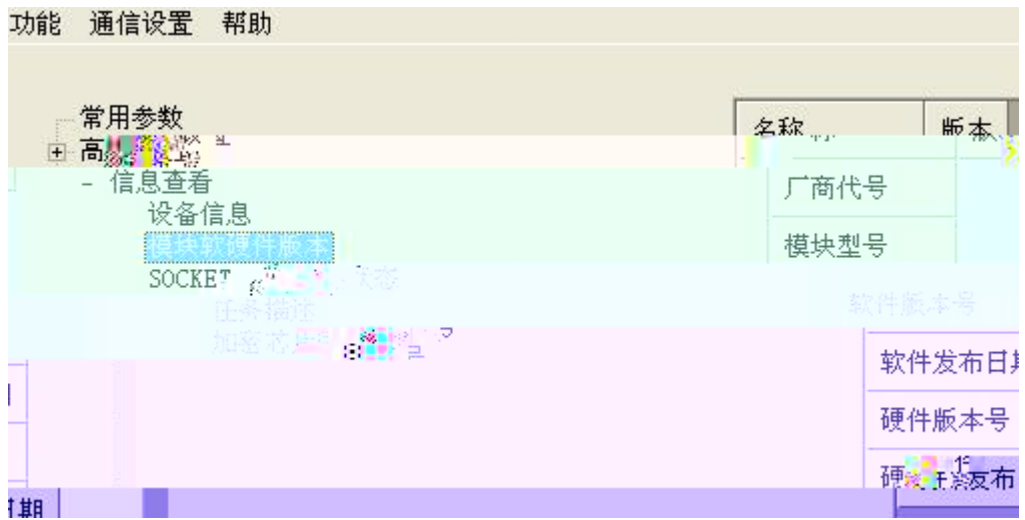
- 10 ()

- 10 ()



- 10 ()



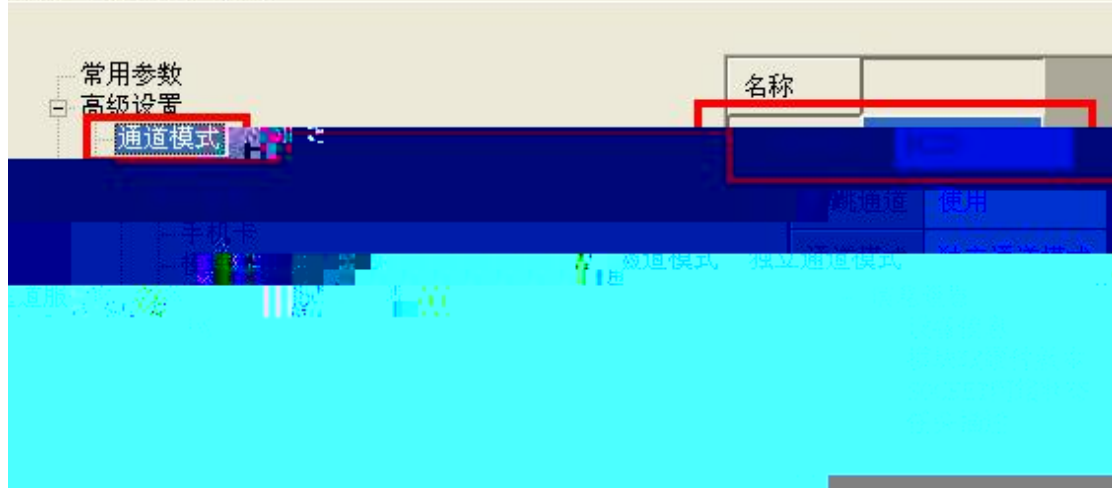


- 10 ()

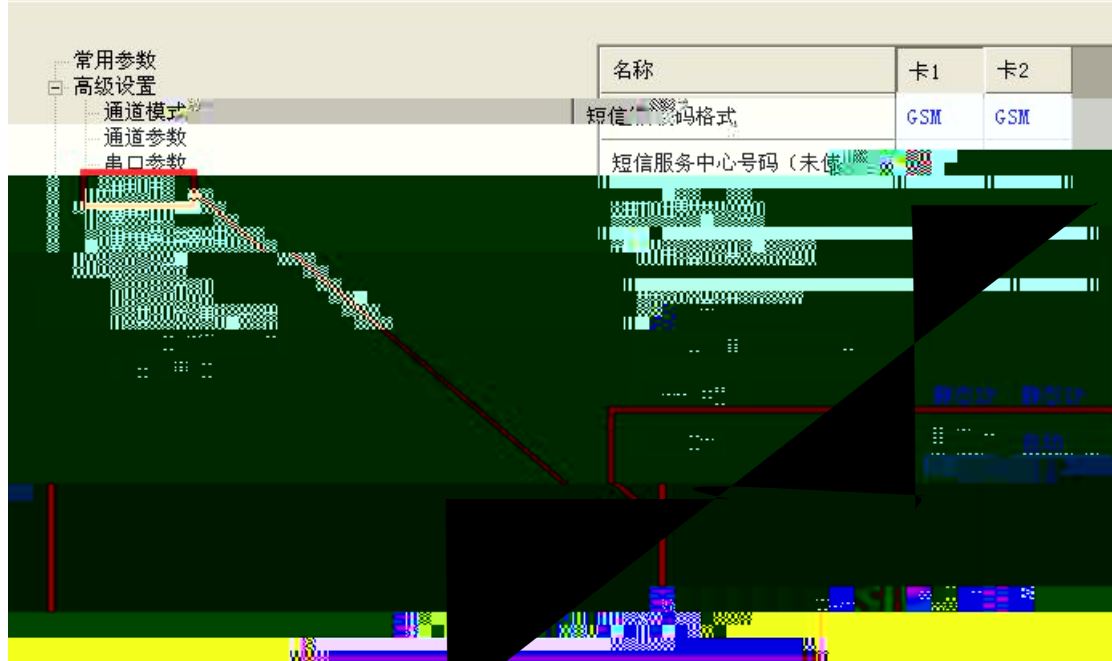
0				

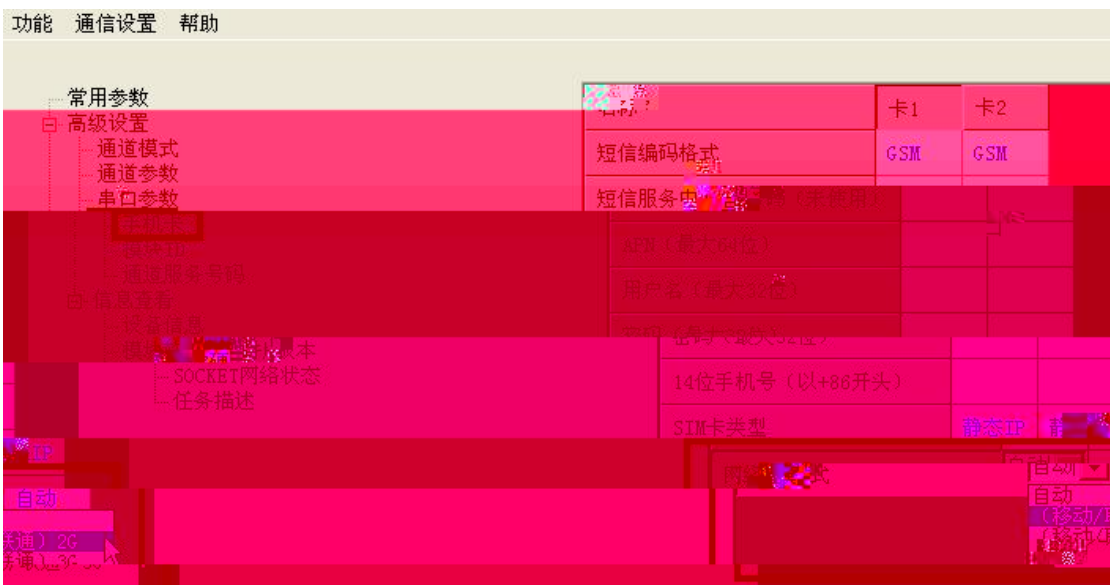
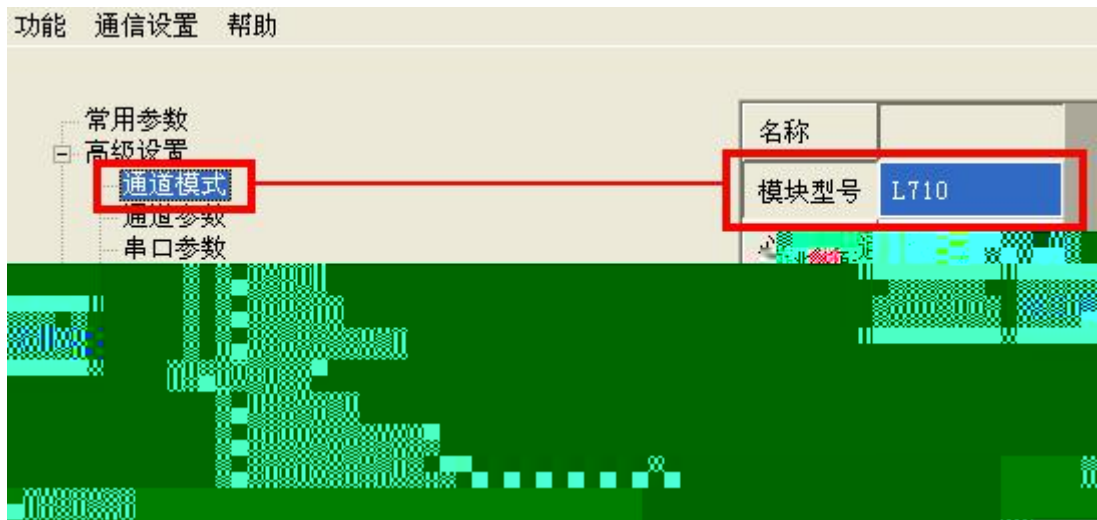
- 10 ()

功能 通信设置 帮助



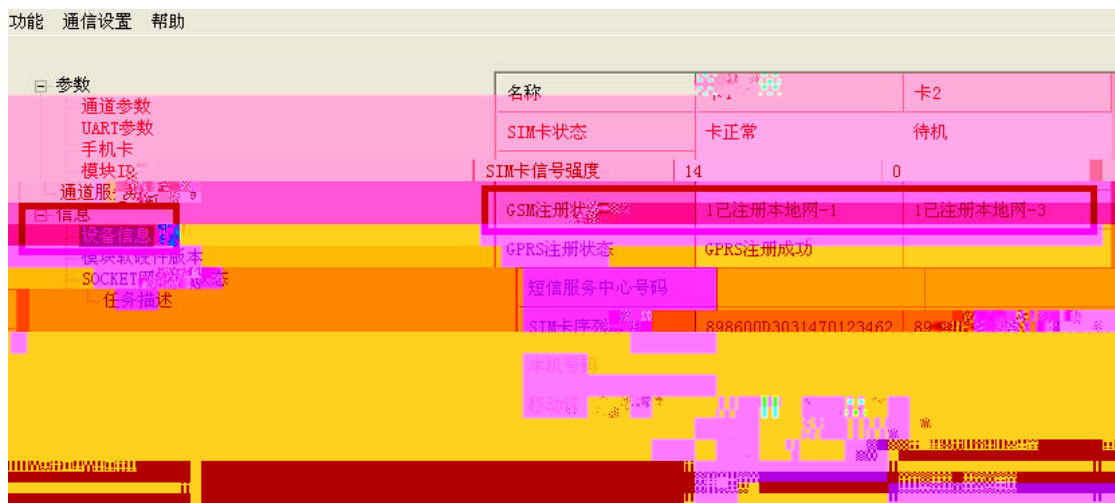
功能 通信设置 帮助





10

--



10

0 10

- 10 ()

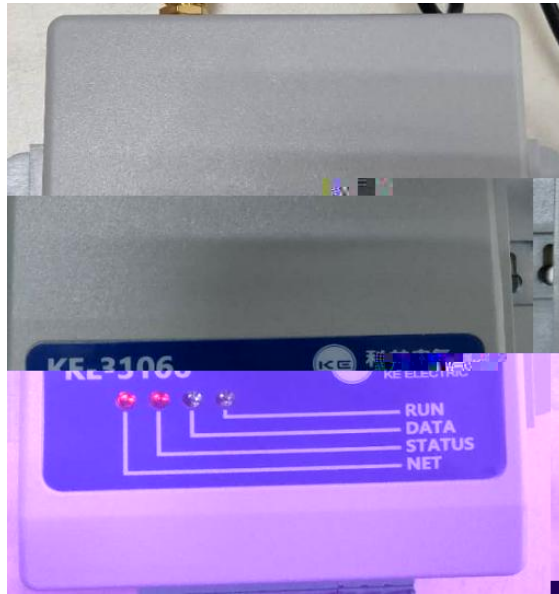


- 10 ()

- 10 ()

10 0

- 10 ()



- 10 ()

1

101

1

- -1

1. 0.	
1. 0.	

- 10 ()

0

0

10

- 10 ()

- 10 ()

	01 0 00 00 00 00 1	01 1 00 00 00 00 1

	01 00 00 00 00 1	01 00 00 00 00 0

- 10 ()

	01 00 00 00 00	01 00 00 00 00 1



监 功能和 护软件 串口，故调 结 后，必 关闭监 功能或 启设备。否
护软件操 可能会出 常。
